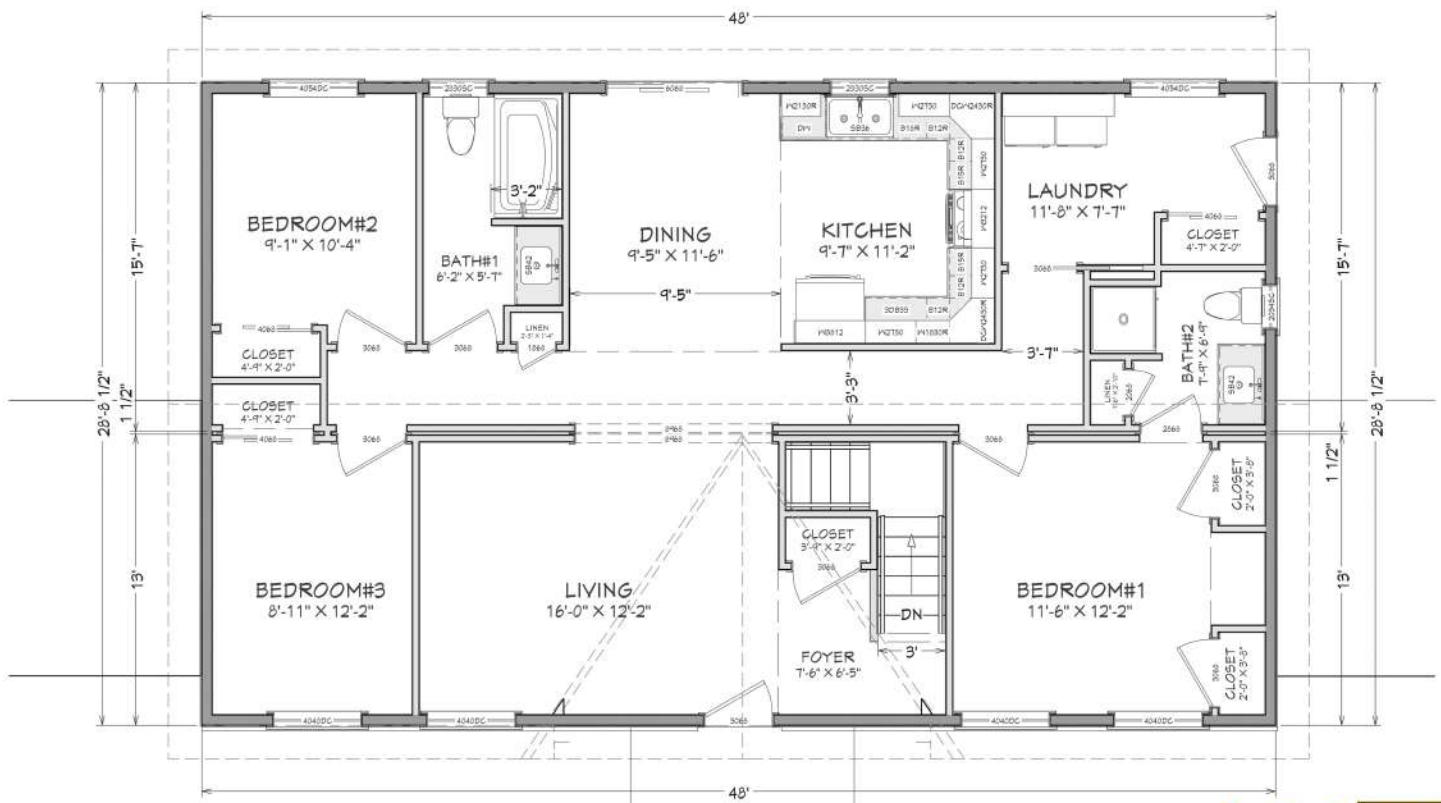


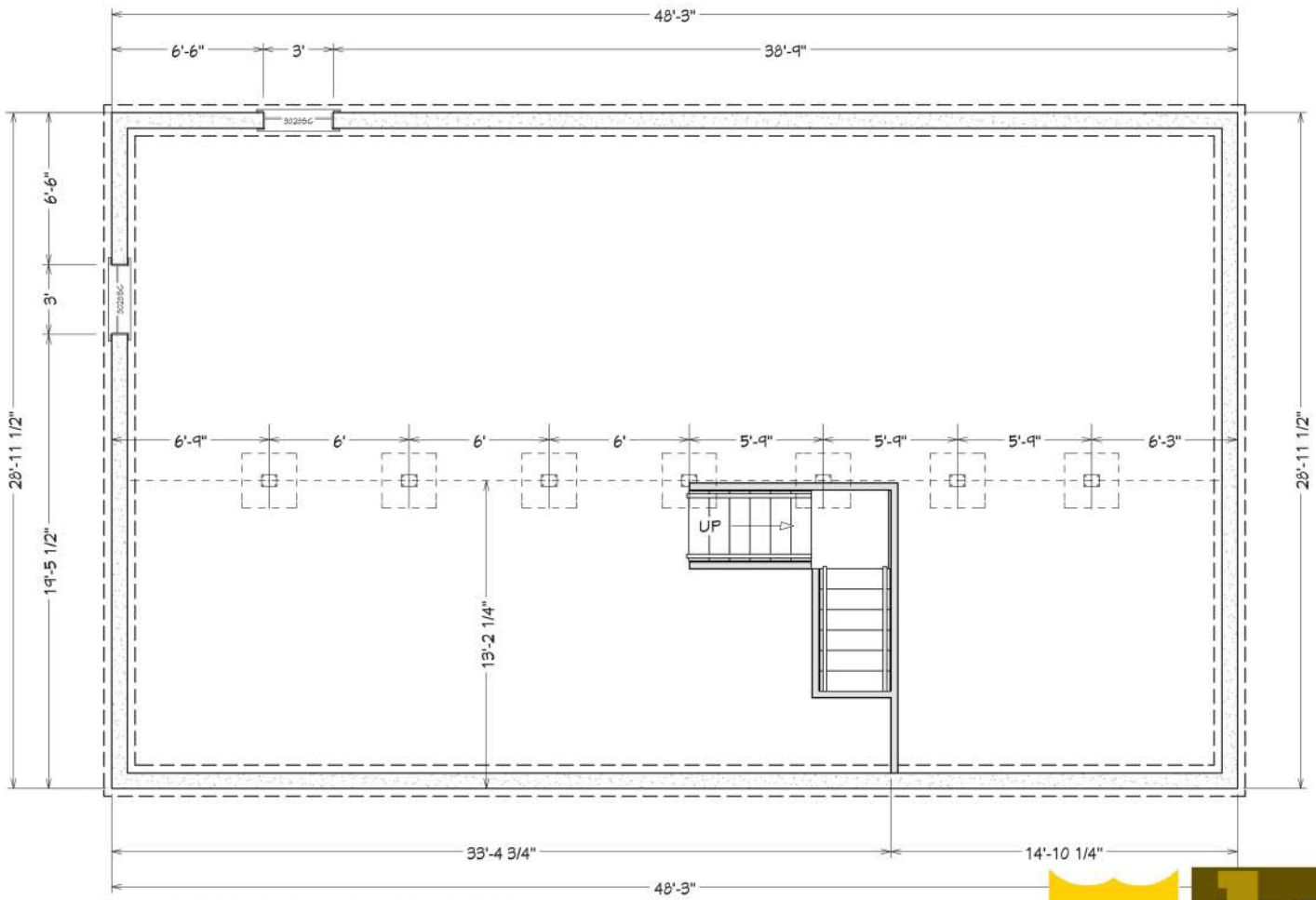
MODEL: HURONDALE (603)
1378 sft per Floor





1378 MAIN FLOOR PLAN
 MODEL: HURONDALE (603)
 sft per Floor





1395 sft per Floor
BASEMENT FLOOR PLAN
MODEL: HURONDALE (603)





SCHEDULE 'A'
SALES AGREEMENT PRICING

PM#10368_Hurondale Spec 603 - Dealer

VENDOR: ROYAL HOMES LTD. - PHONE 519-357-2606 / FAX 519-357-1742

PURCHASER: _____

SITE LOCATION: _____ May-25

SALESPERSON: _____ Page 1 of 1

One Basic Home Hurondale model delivered & set on purchasers foundation as per the attached drawings, approx. 1378 SF including all standard features, equipment, fixtures, materials, services, cabinetry and finishing as specified in the Schedule "B" of the attached Dealer Sales Agreement, plus the following:

Standard 4/12 roof pitch, peak over front door to be 6/12.

Mix of casement/awning windows as per plan, upgraded black exterior window frames, standard white vinyl interior window frames.

Front steel entry door, single bottom panel with 3/4 clear glass with upgraded black exterior frame and standard white vinyl interior frame.

Side steel entry door (RG11) with upgraded black exterior frame and standard white vinyl interior frame.

Bath #1 with single vanity with standard vanity faucet, standard toilet and 66x36 whirlpool tub with standard chrome tub/shower faucet, tile to the ceiling, and standard bathroom accessories.

Bath #2 with single vanity with standard vanity faucet, standard toilet and 36x36 acrylic shower base with tiled walls to the ceiling and standard shower door with clear glass.

Main floor laundry roughin with standard laundry shelf.

Kitchen cabinets per Schedule E, layout as shown on floor plan, kitchen features standard sink and faucet and upper microwave cabinet.

Flooring as noted on the Schedule E

Horizontal vinyl siding on entire home including 2 gable ends, Front gable end to have vinyl shake siding, aluminum corner accent trim on front elevation.